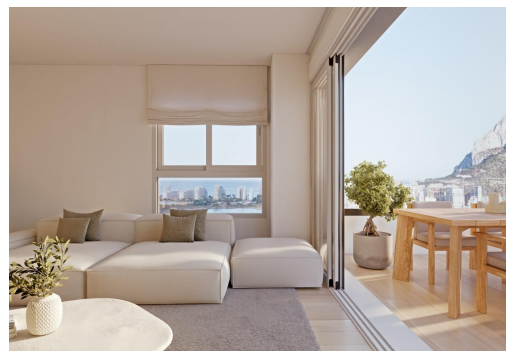




REF: SP-38831

Novostavba · Apartment · Calpe



2 LOŽNICE



2 KOUPELNY



100M²



0M²



ANO



B



Klíčové vlastnosti

- Ložnice: 2
- Postaveno: 100m²
- Koupelny: 2
- Energetické hodnocení: B

Vlastnosti

- Beach: 450 Meters
- Double Bedrooms: 2
- Gated
- Laundry Room
- Near Bus Route
- Near Commercial Center
- Number of Parking Spaces: 1
- Storage / Trastero
- Communal Pool
- Elevator/Lift
- Gym
- Location: Coastal, Urbanisation
- Near Childrens Parks
- Near Schools
- Parking - Space
- Terrace: 15 Msq.