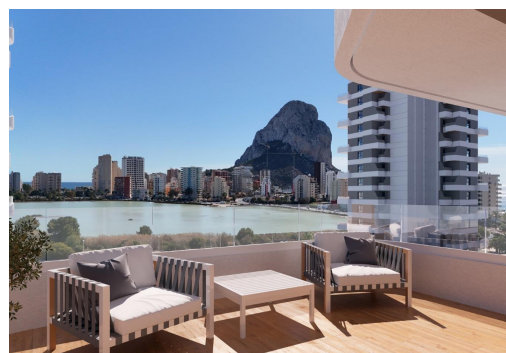
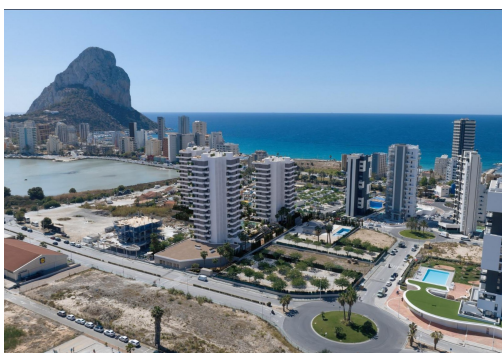




REF: SP-64530

New Build · Apartment · Calpe



3 BEDROOMS



2 BATHROOMS



126M²



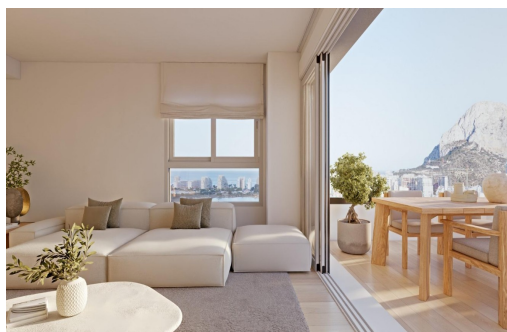
0M²



YES



B



Modern New Build Homes in Calpe Just 450 m from Playa del Cantal Roig A Contemporary Residential Complex Near the Sea This exclusive residential complex features 120 new build apartments with 2 and 3 bedrooms, distributed across three modern towers. Located only 450 m from Playa del Cantal Roig and within the peaceful area of El Saladar, the development offers the perfect blend of coastal living and urban convenience. The center of Calpe is just minutes away, while the stunning Salinas de Calpe and the iconic Natural Park of Peñón de Ifach create a unique natural backdrop. Sea views are available from the third floor upwards. Premium Amenities for an Exceptional Lifestyle Designed to maximize comfort, the gated community offers a wide range of amenities, including an adult swimming pool, children's pool, swimming lane, paddle court, gym, social club, landscaped gardens with play areas, bicycle parking and digital par...

key features

- Bedrooms: 3
- Bathrooms: 2
- Built: 126m²
- Energy Rating: B

Features

- Beach: 450 Meters
- Communal Pool
- Double Bedrooms: 3
- Elevator/Lift
- Gated
- Gym
- Laundry Room
- Location: Coastal, Urbanisation
- Near Bus Route
- Near Childrens Parks
- Near Commercial Center
- Near Schools
- Number of Parking Spaces: 1
- Parking - Space
- Storage / Trastero
- Terrace: 24 Msq.