



REF: RD-46743

Novostavba · Villa · Fuente Álamo



3 LOŽNICE



2 KOUPELNY



205M²



843M²



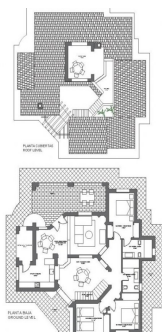
B



PLANO LOCALIZACION



PARCELA/LOT SIZE 14 818m ²	SUPERFICIE UTILIZABLE AREA: 168.87m ²
PARCELA/LOT SIZE 31 859m ²	DE CONSTRUCCION AREA: 162.75m ²
PARCELA/LOT SIZE 38 896m ²	COVERED BUILD AREA: 205.26m ²
PARCELA/LOT SIZE 38 896m ²	DE CONSTRUCCION TOTAL: 205.26m ²
PARCELA/LOT SIZE 38 896m ²	TOTAL BUILD AREA



Klíčové vlastnosti

- Ložnice: 3
- Postaveno: 205m²
- Energetické hodnocení: B
- Koupelny: 2
- Pozemek: 843m²

Vlastnosti

- Air Conditioning: Pre-Installed
- Double Bedrooms: 3
- Gated
- Location: Rural, Urbanisation
- Parking - Space
- Storage / Trastero
- Useable Build Space: 168 Msq.
- Beach: 7500 Meters
- Garden
- Key Ready
- Number of Parking Spaces: 1
- Solarium: Yes
- Terrace: 30 Msq.