



REF: SP-61985

New Build · Villa · Benitachell



3 BEDROOMS



4 BATHROOMS



222M²



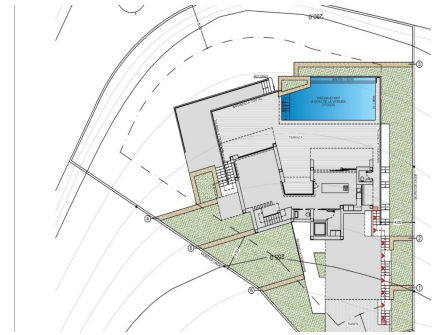
1.149M²



YES



B



NEW BUILD LUXURY VILLA IN CUMBRE DEL SOL In the heart of the Residential Cumbre del Sol, you can find this luxury villa with its private pool. New Build modern villa design combines in an elegant and functional way, modern and Mediterranean architecture. On the façade, characterized by large geometrical shapes based on diagonal lines, the colour white dominates and the use of natural stone allows it to blend in with its environment. Its huge Mediterranean-style garden, crowned with an infinity-effect pool that blends into the blue of the sea, added to the mild climate of the North Costa Blanca, invites you to enjoy long days in the fresh outdoors nearly all year round. Its location will allow you to enjoy a peaceful and comfortable environment. The villa is distributed over 3 floors. You access the villa on through top floor, with covered parking for two vehicles and a lift that connects the entire house. ...

key features

- Bedrooms: 3
- Bathrooms: 4
- Built: 222m²
- Plot: 1.149m²
- Energy Rating: B

Features

- Air Conditioning: Pre-Installed
- Beach: 1000 Meters
- Double Bedrooms: 3
- Elevator/Lift
- Garden
- Gated
- Location: Coastal, Urbanisation
- Near Commercial Center
- Near Schools
- Number of Parking Spaces: 2
- Parking - Space
- Private Pool
- Terrace: 299 Msq.
- Under-Build / Basement
- Useable Build Space: 177 Msq.
- Views: Sea