



REF: RD-56121

Nowo zbudowane · Bungalow · San Miguel



2 SYPIALNIE



2 ŁAZIENKI



70M<sup>2</sup>



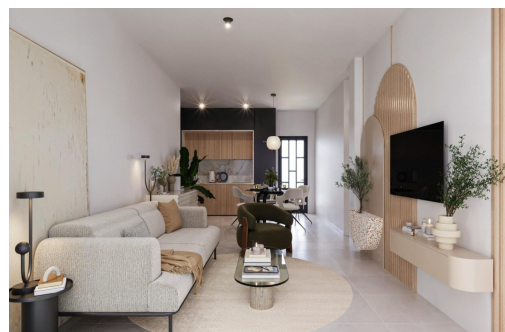
41M<sup>2</sup>



TAK



B



## key features

- Sypialnie: 2
- Łazienki: 2
- Powierzchnia: 70m<sup>2</sup>
- Działka: 41m<sup>2</sup>
- Ocena energetyczna: B

## Szczegóły oferty

- Air Conditioning: Pre-Installed
- Beach: 9000 Meters
- Communal Pool
- Double Bedrooms: 2
- Gated
- Location: Rural, Urbanisation
- Near Bus Route
- Near Childrens Parks
- Near Commercial Center
- Near Schools
- Ogród
- Space
- Storage / Trastero
- Terrace: 7 Msq.
- Useable Build Space: 65 Msq.