



REF: RD-47997

New Build · Penthouse · Santa Pola



2 BEDROOMS



2 BATHROOMS



94M<sup>2</sup>



0M<sup>2</sup>



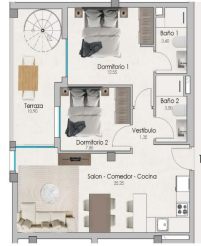
YES



B



| PLANTA ATICO / ESCALERA 3<br>VIVIENDA 1 |                       |        |       |
|---|-----------------------|--------|-------|
| SUPERFICIE UTILES                       | SUPERFICIE CONSTRUIDA |        |       |
| Salon-comedor-cocina                    | 20,20                 | Cuadro | 01,10 |
| Habit                                   | 1,80                  | Habit  | 1,80  |
| Dormitorio 1                            | 15,50                 | Habit  | 15,50 |
| Baño 1                                  | 1,80                  | Habit  | 15,50 |
| Dormitorio 2                            | 7,80                  |        |       |
| Baño 2                                  | 3,20                  |        |       |
| Terraza                                 | 10,80                 |        |       |
| Revestido                               | 20,10                 |        |       |
| TOTAL                                   | 80,20                 |        | 34,90 |



| PLANTA SOLARIUM / ESCALERA 3<br>VIVIENDA 1 |                       |        |       |
|--|-----------------------|--------|-------|
| SUPERFICIE UTILES                          | SUPERFICIE CONSTRUIDA |        |       |
| Salon-comedor-cocina                       | 20,20                 | Cuadro | 01,10 |
| Habit                                      | 1,80                  | Habit  | 1,80  |
| Dormitorio 1                               | 15,50                 | Habit  | 15,50 |
| Baño 1                                     | 1,80                  | Habit  | 15,50 |
| Dormitorio 2                               | 7,80                  |        |       |
| Baño 2                                     | 3,20                  |        |       |
| Terraza                                    | 10,80                 |        |       |
| Revestido                                  | 20,10                 |        |       |
| TOTAL                                      | 80,20                 |        | 34,90 |



**NEW BUILD RESIDENTIAL COMPLEX IN SANTA POLA** New Build modern gated residential complex consisting of 1, 2 and 3 bedroom apartments and penthouses with 2 complete bathrooms. The complex consists of 4 staircases of flats with spacious landscaped communal areas, including swimming pool, relaxation area and gymnasium. All properties have been carefully designed to provide you with an exceptional living experience, with high quality finishes and a modern style. Enjoy the spacious terraces, where you can relax, enjoy al fresco dining and watch the most spectacular sunsets. The location is simply unbeatable: next to the centre of Santa Pola and the palm grove, and only a few minutes from the promenade, you will be close to a wide range of restaurants, bars and supermarkets. Excellent connection with the national road 332, which connects all the southern Costa Blanca, and with the airport in only 15 minutes.

## key features

- Bedrooms: 2
- Bathrooms: 2
- Built: 94m<sup>2</sup>
- Energy Rating: B

## Features

- Air Conditioning: Pre-Installed
- Beach: 1000 Meters
- Communal Pool
- Double Bedrooms: 2
- Elevator/Lift
- Gated
- Gym
- Location: Coastal, Urbanisation
- Near Bus Route
- Near Commercial Center
- Near Schools
- Number of Parking Spaces: 1
- Parking - Space
- Solarium: Yes
- Storage / Trastero
- Terrace: 30 Msq.